



LAKELSE GATEWAY CONNECTION PROJECT

The Lakelse Gateway Connection Project will more safely connect Terrace to Thornhill and beyond via a 1-kilometre multi-use pathway on the north side of Lakelse Avenue.



WHAT WILL THIS PROJECT LOOK LIKE?

The project will upgrade the existing gravel shoulder to a separated, safe, and accessible 3-metre wide asphalt pathway, and complete related required roadworks. This pathway will span from the historic Old Skeena Bridge at the east end to the entry into downtown Terrace at Apsley Street. At Apsley Street, the pathway will terminate at a small gateway feature—likely including signage, landscaping, and a resting area—marking the entrance into downtown Terrace.

HOW WAS THIS PROJECT FUNDED?

In February 2021, the City of Terrace received a provincial Community Economic Recovery Infrastructure (CERIP) grant for \$921,352 to complete the Lakelse Gateway Connection Project. This grant covers 100% of the project costs. The City of Terrace extends its thanks to the Province of British Columbia for the grant.

PROJECT TIMELINE



Complete

- **Fall 2021:**
 - Request for proposals for design services
- **Winter 2021-2022:**
 - RFP contract awarded to Urban Systems Limited and detailed design drawings received



Currently Underway

- **Winter 2021-2022:**
 - Finalizing designs
 - Holding public consultation with nearby property owners



Upcoming Steps

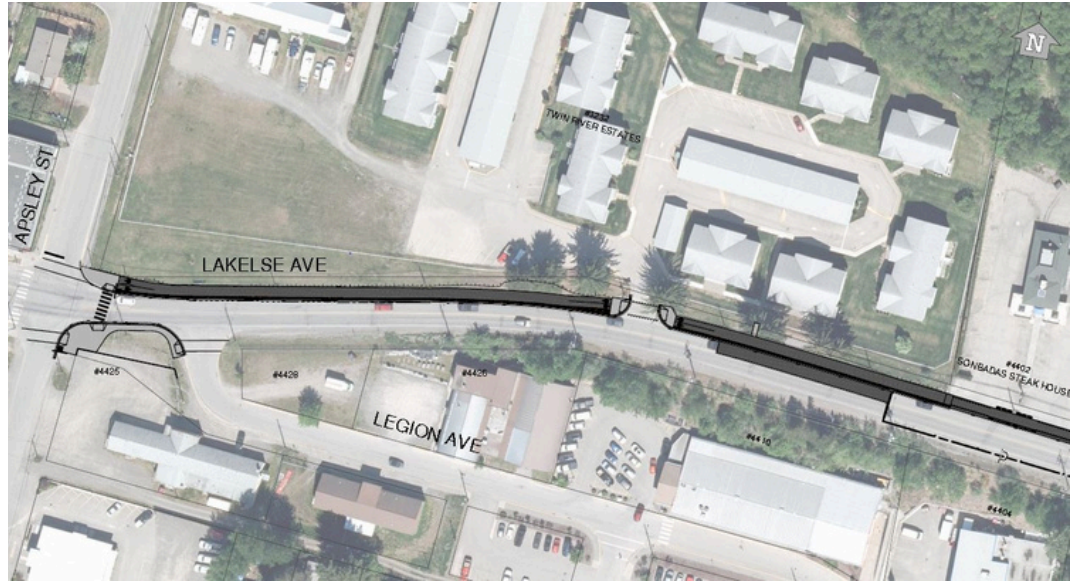
- **Spring 2022:**
 - Gateway art feature award process and consultation
 - Finalizing construction plans, including schedule
- **Spring-Summer 2022:**
 - Construction underway
 - Finalizing art contract, construction, and placement



terrace.ca/lakelse-gateway

HOW DOES THE PROJECT MEET CITY OBJECTIVES?

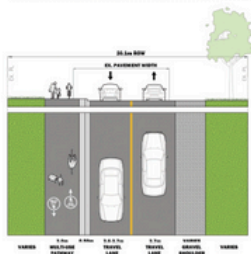
A gateway project was included in our 2018 Downtown Action Plan as one of “Ten Big Moves,” a series of catalyst projects to accelerate a more dynamic downtown for Terrace. This project will significantly enhance this key gateway into Terrace while also completing a recreational connection to existing hiking and cycling trails and the Skeena River. It will serve the needs of residents and provide a recreational amenity for visitors to our community.



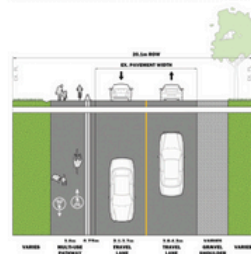
Lakelse Avenue Gateway Project

- New Sidewalk and Crossings
- Location of Downtown Entry Feature

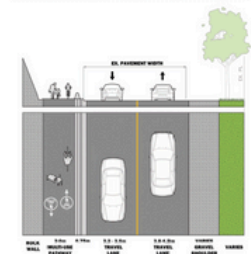
3.0m WIDE MULTI-USE PATHWAY



2.6m TO 3.0m MULTI-USE PATHWAY



3.0m MULTI-USE PATHWAY



Find larger versions of all the images on this flyer on our website.

FOR MORE INFORMATION

PLEASE CONTACT:

Jennifer MacIntyre, Planner III

250-615-4032

jmacintyre@terrace.ca

terrace.ca/lakelse-gateway